



BUCS BUSA PLAYOFFS

Saturday 1st / Sunday 2nd March 2025

Important information

Venue



Burton Sailing Club, Foremark Reservoir, Repton Road, Milton, Repton, Derby, Derbyshire, DE65 6EG

Timings

Saturday

Registration	0845 - 0915
Competitors briefing	0920
First warning signal	0957

Sunday

Sign in	0800 - 0830
First warning signal	0857

Communication with competitors at the event



It is intended that communications with competitors at the event will be by a WhatsApp group, connecting the Race Committee with Team Captains. Please ensure that you provide the appropriate number (*only one per team*) when requested by the organisers.

Rigging

Competitors are expected to help with rigging and de-rigging.

Clothing

Attention is drawn to the following SI:

- 8 PERSONAL EQUIPMENT
- 8.1 RRS 40 is changed to: Competitors shall wear personal flotation devices, except briefly while changing or adjusting clothing or personal equipment. This rule applies at all times while afloat. Wetsuits or drysuits are not personal flotation devices [DP].
- 8.2 All competitors will be required to wear wetsuits or drysuits, unless indicated by the Race Committee on each racing day [DP].

Arrival and car parking

Please refer to the diagrams on a subsequent page.



First Aid Officer



Martin Smethers PRO – 07860 352279

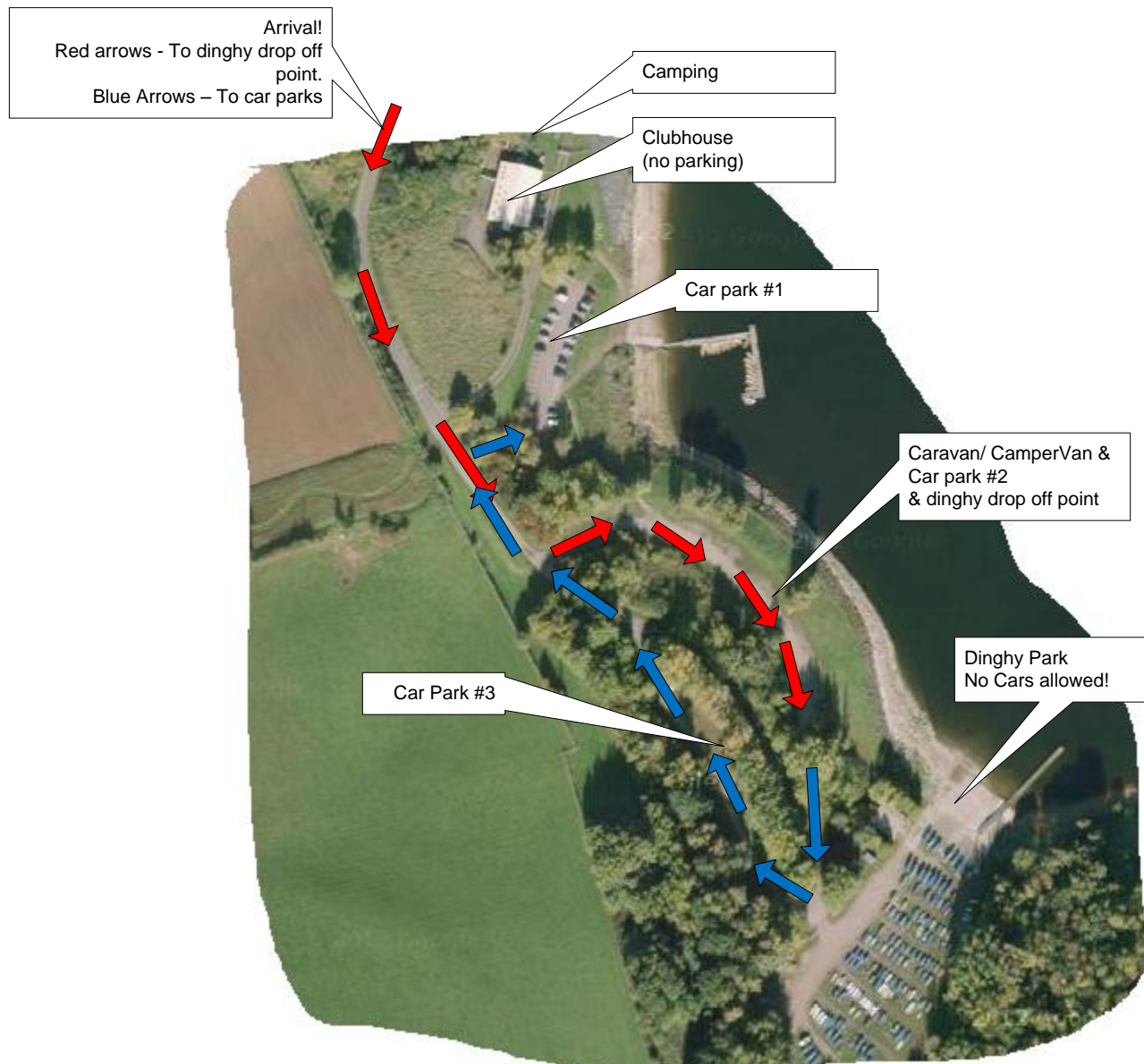
Contacts

Max Lawrence-Griffiths – 07754 779907 M.Lawrence-Griffiths@lboro.ac.uk

Martin Smethers PRO - 07860 352279

DO NOT FORGET

REMEMBER TO BRING SU (ID) REGISTRATION CARDS FOR EACH TEAM MEMBER. WITHOUT THESE, YOU WILL NOT BE ABLE TO ENTER.



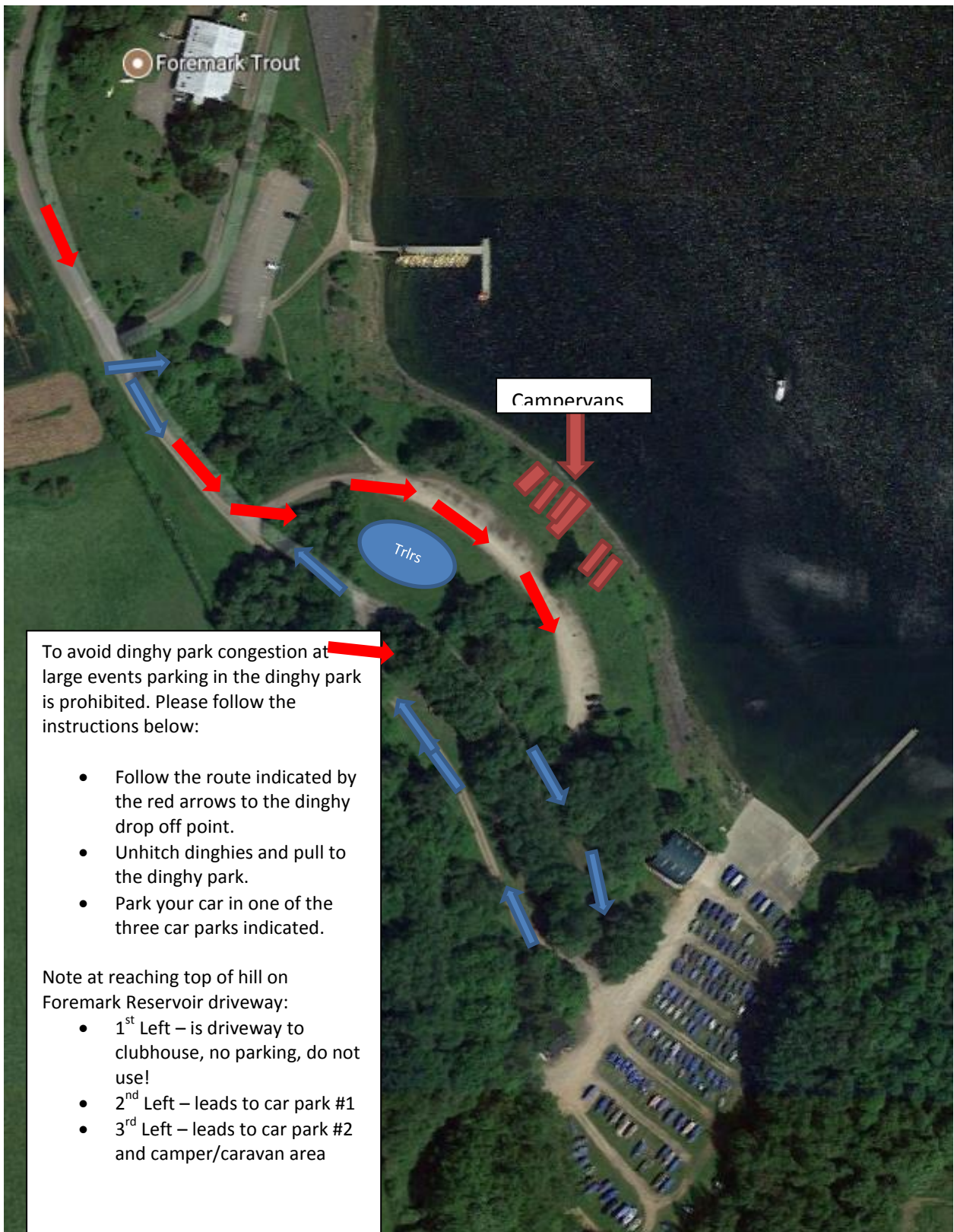
Burton SC - Large Event Arrival

To avoid dinghy park congestion at large events parking in the dinghy park is prohibited. Please follow the instructions below:

- Follow the route indicated by the red arrows to the dinghy drop off point.
- Unhitch dinghies and pull to the dinghy park.
- Park your car in one of the three car parks indicated.

Note at reaching top of hill on Foremark Reservoir driveway:

- 1st Left – is driveway to clubhouse, no parking, do not use!
- 2nd Left – leads to car park #1
- 3rd Left – leads to car park #2 and camper/caravan area



Foremark Trout

Camnervans

Trlrs

To avoid dinghy park congestion at large events parking in the dinghy park is prohibited. Please follow the instructions below:

- Follow the route indicated by the red arrows to the dinghy drop off point.
- Unhitch dinghies and pull to the dinghy park.
- Park your car in one of the three car parks indicated.

Note at reaching top of hill on Foremark Reservoir driveway:

- 1st Left – is driveway to clubhouse, no parking, do not use!
- 2nd Left – leads to car park #1
- 3rd Left – leads to car park #2 and camper/caravan area